



# THE VOTER

## DEMOCRACY

## WORKS AWARD

## WINNER ANNOUNCED

### Second Democracy Works Award Dinner

Honoring Woodland Community volunteer  
**Michael V. Brady**

#### When:

**Tuesday, November 6  
6:00 pm**

#### Where:

**Creative Catering  
1580 Case Place  
(NW corner of E. Main  
St. and Pioneer Ave.)  
Woodland**

**The dinner is free to up to date LWV members (including those who renew or join that night); \$15 for non members**

**Guest speaker: Rachel Kraynak, Waste Management**

**The public is invited to attend. RSVP to Bj Ford, 662-0952, or email [bjford@pacbell.net](mailto:bjford@pacbell.net)**

At the October meeting of the League of Women Voters board of directors the winner of the second "Democracy Works" award was announced.

Woodland resident, Michael V. Brady, was chosen from a pool of applications received by the League last month. Nominated by City of Woodland, public works director Gary Wegener, Brady was chosen because of his proactive and positive approach to being chairperson of the City of Woodland's "Green Waste Citizen Advisory Committee" formed after the City Council passed a green waste container ordinance in 2005. Through his positive actions on the committee, Brady, "...furthered the democratic process to keep democracy working for the citizens of Woodland," said League of Women Voters of Woodland copresident Eileen Racki.

In the nomination letter, Wegener states, "Initially, the vast majority of the committee members were opposed to a green waste container program. Mr. Brady was the glue that held the committee together on an issue that initially stirred the emotions of the committee members. He guided the group to a meaningful conclusion ... which will be the start of the new green waste collection program, in January, 2008."

Last year, the League of Women Voters of Woodland presented the first ever "Democracy Works" award to *Woodlanders for Responsible Government*. This year's award will be given out on November 6. See inset box to the left for details.

## LWV Board of Directors

2007-08

Please contact any member of the board  
with your ideas and questions.

### Co-presidents

Nancy Rice 662.9766

[nrice@sbcglobal.net](mailto:nrice@sbcglobal.net)

Eileen Racki 666.1811

[edrack@dcn.davis.ca.us](mailto:edrack@dcn.davis.ca.us)

### 1st Vice-president

#### Publicity

Barbara Fleck.....661-9555

[cbfleck@sbcglobal.net](mailto:cbfleck@sbcglobal.net) 2nd Vice-president

#### Membership

Loretta Hansen 669.6669

[lhansen1226@sbcglobal.net](mailto:lhansen1226@sbcglobal.net)

#### Recording Secretary

Kathy Harryman

662.2189

[rosekay@hotmail.com](mailto:rosekay@hotmail.com)

#### Treasurer

Judy Simas

662.1343

[jsimas@wjusd.org](mailto:jsimas@wjusd.org)

#### Voters Service &

#### Publications

Pat Butler 530.525.0641

[tahoebutler@sbcglobal.net](mailto:tahoebutler@sbcglobal.net)

#### Legislation

Bj Ford 662.0952

[bjford@pacbell.net](mailto:bjford@pacbell.net)

#### Natural Resources Director

Debra Chase 473.2820

[dchase@tuleyome.org](mailto:dchase@tuleyome.org)

#### Finance Directors

Lucinda Talkington 662.0535

[lucbobtalk@sbcglobal.net](mailto:lucbobtalk@sbcglobal.net)

Sadie Barga 662.5136

#### Voter Editor

Carol Souza Cole 666.2097

[carolsouzacole@cal.net](mailto:carolsouzacole@cal.net)



## Co-Presidents' Message

by Eileen Racki and Nancy Rice

**Hi Leaguers,** The dialogue continues...

**Both of us:** First, we want to call your attention to the Democracy Works Dinner next week, the evening of November 6. It is free to those of us who are up on our dues (how can you beat that!), great company, and a most deserving award recipient. We have a good speaker lined up, too. Hope to see you there. See the story elsewhere in this newsletter for details and the invitation in the mail, too.

**Nancy:** Eileen, I'm back from my October vacations, a wonderful trip back to upstate New York to see my son and family and timed to see the autumn leaves at their most gorgeous. I truly hit the jackpot there - the leaves at their most beautiful and the family doing well. I also went to Hyde Park to see the Eleanor and F.D.R. homes. It was quite a moving experience. Then the girls from my Woodland High School Class of 19\_\_ went to Eureka for our annual long weekend get-together, which I wouldn't miss. Meanwhile, I have done a few things, presiding in the summer at a board meeting and responding to state and National LWV requests for action letters, one on governance of Washington D.C. and one against AB 8, a state health care reform bill based on the employer-based system of coverage. Eileen, it has been so good to know you have been holding the fort here this month!

**Eileen:** Glad you're back, Nancy. Now it's your turn to preside for a while. Though I did get in a trip to Ireland and Holland in August. We bicycled with a group in Holland, and they have great bike paths. Too bad we don't have that here. The Woodland LWV does have a position on bike paths. Maybe it's time to act on that.

**Nancy:** It's time to put the bike path issue out again, that's for sure. I saw great paths in Vermont and in Germany and this year in New York along the Erie Canal. What a difference from our area. It's clearly needed here, since we do have cyclists on our country roads but it doesn't look any too safe.

**Both of us:** Remember to save the date and RSVP for the Democracy Works Dinner. And, the Holiday Party will be December 14 - please save the date.

**See you....!**

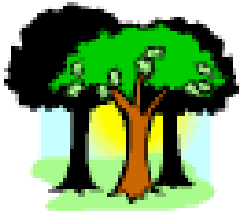
**Nancy and Eileen**

## Access to Yolo Wildlife Area Under Discussion

by Debra Chase, LWV Natural Resource Director  
and Andrew Fulks, of Tuleyome

Yolo County is known for its varying landscapes. From rolling rivers to dramatic cliffs, places to hike, birdwatch, river raft, fish, hunt, and view nature exist within the county's 661,760 acres. Access to these public areas is usually obtained by traversing a county road. Sometimes, however, a county road might be abandoned and access to natural areas can be cut off, or restricted. Landowners next to segments of these access roads can apply to the Board of Supervisors for abandonment. Once a public road is abandoned, public access is denied.

Currently, a request for abandonment of a section of County Road 16 in northeastern Yolo County, is being considered. This section of road provides access to the eastern side of the Fremont Weir and adjacent public lands owned by the California Department of Water Resources. A portion of this 1,000 acres is managed by the Department of Fish and Game as the Fremont Weir State Wildlife Area. Access to the Sacramento River, adjacent riparian habitat, and ponds is accomplished using Road 16, which provides the only public access to the eastern side. A landowner is asking for the County to abandon the road, largely due to issues with trespassing, illegal dumping, and vandalism.



The recently completed Yolo County Parks Master Plan talks about the County providing 'gateway' facilities, to allow access to other agencies' land holdings, such as the Fremont Weir State Wildlife Area.

The Open Space Element of the General Plan identifies the Yolo Bypass (of which the Fremont Weir is a part) as an open space and recreation resource. Access to this open space should continue per the General Plan.

***Editor's note:*** This road closure proposal will have its first public hearing by the county Planning Commission on November 8. The staff recommendation is

to deny the proposed county road 16 closure that serves as a public access to state lands. To access the agenda and downloadable staff reports go to: <http://www.yolocounty.org/org/PPW/planning/pcdocs.htm>



## LEAGUE BOARD MEETING HIGHLIGHTS

### October 9, 2007

- The board unanimously approved Michael Brady as the 2007 Democracy Works award recipient.
- Membership director, Loretta Hansen, reported that the membership books need to be updated and the League should consider holding a members' tea in January and distribute at that time.
- Plans for the holiday progressive dinner were discussed.
- Lucinda Talkington is beginning to work on the State of the Community Luncheon, February, 2008. City manager Mark Deven will be the featured speaker.
- Project Voter Smart was discussed and will be agendaized for the next board meeting.
- The League has a combined treasury of \$13,509.70 in checking, savings and a certificate of deposit.

**GET READY, GET SET,  
VOTE**

Visit:

<http://ca.lwv.org/lwvc/edfund/elections/index.html>  
to find out about the 2008 elections.



Become a member today!

Name: \_\_\_\_\_

Address: \_\_\_\_\_

City: \_\_\_\_\_ Zip: \_\_\_\_\_

Phone: \_\_\_\_\_

email address: \_\_\_\_\_

I would prefer to receive the monthly newsletter, *The Voter*, by:

\_\_\_\_\_ email      \_\_\_\_\_ USPS mail      \_\_\_\_\_ both

**Dues:** \$45 individual, \$60 for a family. Voluntary contributions of \$5 are welcome to cover recent state dues increases. While dues to LWV are not tax deductible, contributions to our Education Fund are deductible to the extent allowed by law.

Education Fund contributions are needed and used for voter outreach and education.

[WWW.WOODLAND.CA.LWVNET.ORG](http://WWW.WOODLAND.CA.LWVNET.ORG)

**MAIL  
MEMBERSHIP  
FORM TO:  
LWV WOODLAND  
P.O. BOX 2463  
WOODLAND CA  
95776**

LWV WOODLAND • P.O. BOX 2463 Woodland 95776



**NOTE TO MEMBERS:**

Due to the rising cost of postage, and the fact that over half of the membership prefers an electronic copy of the Voter, at its July, 2007 meeting the LWV Woodland board made the decision to have an e-Voter only. For the few members without email, a paper copy will continue to be mailed.

**STATE INITIATIVE UPDATE  
Report Available Online**

Updated information about next year's ballot initiatives available on the Secretary of State's website at:

<[http://www.sos.ca.gov/elections/elections\\_j.htm](http://www.sos.ca.gov/elections/elections_j.htm)>..

**Calendar 2007**  
**November 6**  
*Election Day*  
 DEMOCRACY WORKS  
 AWARD DINNER 6 PM,  
 at Creative Catering,  
 1580 Case Place in  
 Woodland  
**December 14**  
 LWV Holiday Party

